

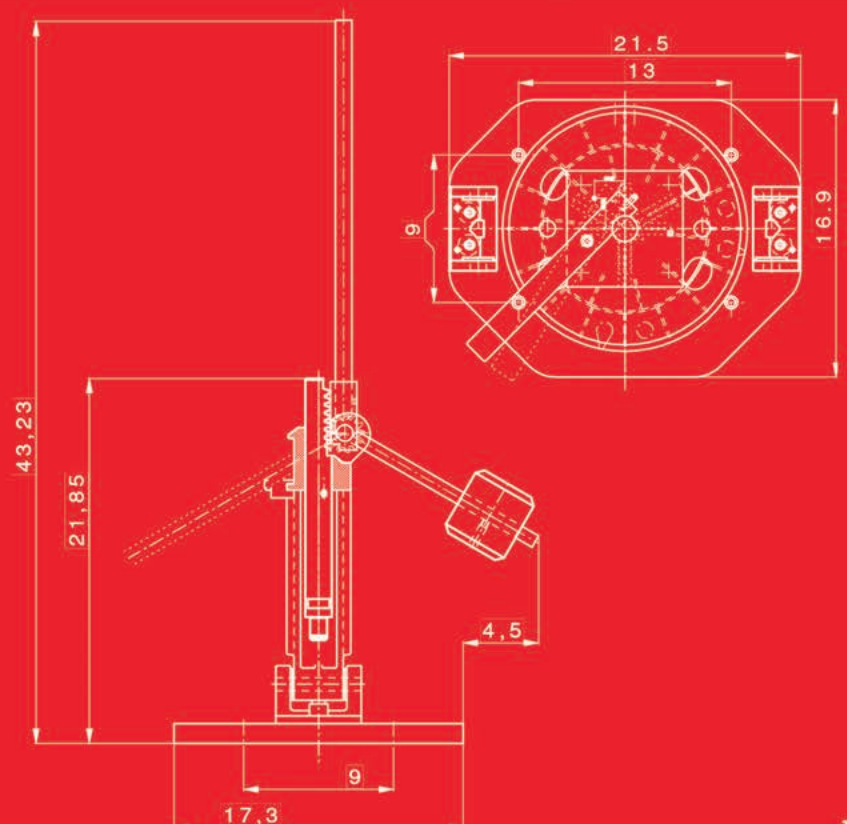
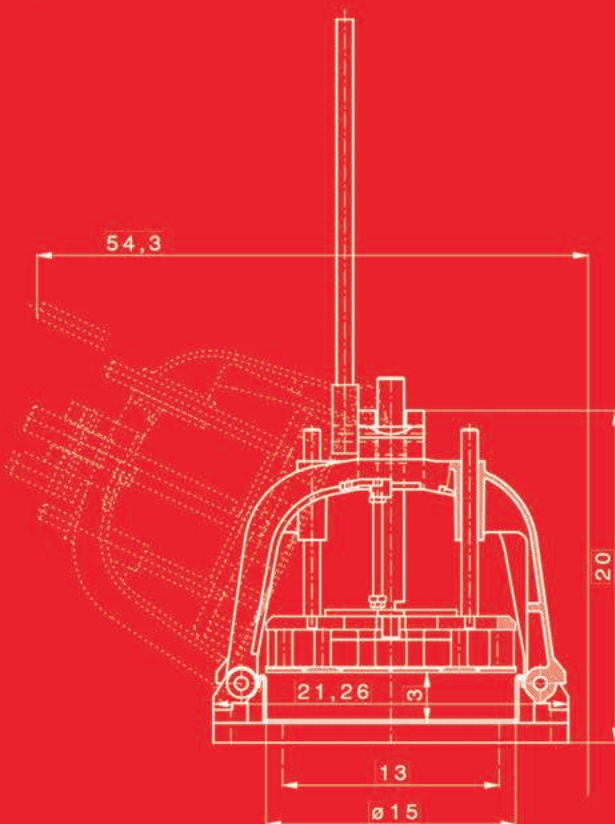
HAND DIVIDER

HAND DIVIDER

The Erika Record HAND DIVIDER is a simple, durable and efficient solution for dividing large quantities of dough into smaller pieces.

This is ideal for rapidly portioning bagel, cookie, pie, pizza and sweet doughs. Manual portioning methods would require you to scale each desired portion individually. However, with our HAND DIVIDER, you can quickly scale a large portion of dough and divide it into 15 or 36 equally portioned pieces.

Operation is easy and simple. First, weight a large portion of dough and evenly spread it within your dividing pan. Next, lower the knife head onto the dividing plate and firmly press. The results are equally portioned pieces of dough. This unit can sit easily on a table top or be used with the available stainless steel stand as depicted.



FEATURES

- ❖ Lightweight, sanitary dividing pan included
- ❖ Pressure on dough is determined by the operator
- ❖ Sanitary cutting knives
- ❖ Easy weight adjustment
- ❖ Minimal maintenance required
- ❖ Head can be tilted for easy cleaning

AVAILABLE OPTIONS

- ❖ Stainless Steel stand with casters/wheels for enhanced mobility
Dimensions (D x W x H): 15.25" x 20" x 29.5" | 387mm x 508mm x 749mm

CONSTRUCTION

- ❖ Arch made of sturdy cast iron
- ❖ Lightweight, sanitary dividing pan made of PVC plastic
- ❖ Teflon coated knife head assembly and piston, perfect for high hydration dough types
- ❖ Finished with lead free enamel paint
- ❖ Easy weight adjustment

ELECTRICAL SPECIFICATIONS

- ❖ Completely manual operation

PRODUCTION RATE

- ❖ 4,500 – 7,500 pieces/hour (depending upon operator efficiency and production flow)

AVAILABILITY

- ❖ Available in 15 and 36 part configurations.

WARRANTY

- ❖ 2 years parts & labor (on non-consumable parts)

APPROVALS & CERTIFICATIONS

Erika Record is proud to receive the following certifications for our flagship Divider/Rounder lineup:



Below are applicable specifications for each of the machine models we offer. This includes: net weight, dimensions, shipping weight, shipping dimensions, dough weight ranges and knife head assembly compatibility.

EQUIPMENT SIZE & DIMENSIONS

MODEL	NET WEIGHT	DIMENSIONS (D X W X H)	SHIPPING WEIGHT	SHIPPING DIMENSIONS (D X W X H)
SEMI <i>Fixed & Interchangeable (Removable Head Series)</i>	770 lbs (350 kg)	28.5" x 25.5" x 78.75" (724mm x 648mm x 2000mm)	880 lbs (399 kg)	31" x 33" x 63" (788mm x 839mm x 1601mm)
EASY <i>Fixed & Interchangeable (Removable Head Series)</i>	816 lbs (370 kg)	31" x 26.75" x 60" (788mm x 680mm x 1524mm)	946 lbs (429 kg)	35" x 35" x 76" (889mm x 889mm x 1930mm)
EASY PLUS <i>Fixed & Interchangeable (Removable Head Series)</i>	816 lbs (370 kg)	31" x 26.75" x 60" (788mm x 680mm x 1524mm)	946 lbs (429 kg)	35" x 35" x 76" (889mm x 889mm x 1930mm)
FULL <i>Fixed, Non-Interchangeable Series</i>	1100 lbs (499 kg)	29.5" x 32" x 61" (750mm x 813mm x 1550mm)	1540 lbs (699 kg)	35" x 35" x 76" (889mm x 889mm x 1930mm)
FULL CLASSIC <i>Fixed, Non-Interchangeable Series</i>	1100 lbs (499 kg)	27" x 33.5" x 64" (686mm x 851mm x 1626mm)	1540 lbs (699 kg)	35" x 35" x 76" (889mm x 889mm x 1930mm)
HAND DIVIDER <i>Fixed, Non-Interchangeable Series</i>	150 lbs (68 kg)	17" x 21.5" x 43.25" (432mm x 546mm x 1099mm)	180 lbs (82 kg)	31" x 21" x 29" (788mm x 534mm x 737mm)

KNIFE HEAD ASSEMBLY SPECIFICATIONS

KNIFE HEAD	# OF PARTS	DOUGH PIECES WEIGHT	TOTAL WEIGHT RANGE
8/250 8/251 RH	7	9 - 21 oz 255 - 595g	3.9 - 9.2 lbs 1.76 - 4.17 kg
6/150 6/151 RH	15	5.4 - 9.5 oz 153 - 269g	5.1 - 8.9 lbs 2.31 - 4.03 kg
7/70 7/71 RH	20	2.5 - 7.1 oz 71 - 201g	3.1 - 8.9 lbs 1.41 - 4.03 kg
4/40 4/41 RH	30	1.4 - 4.3 oz 40 - 121g	2.6 - 8.1 lbs 1.17 - 3.67 kg
11/30 11/31 RH	36	1 - 4 oz 29 - 113g	2.3 - 9.0 lbs 1.04 - 4.08 kg
10/25 10/25 RH*	36	.9 - 3.3 oz 26 - 93g	2.0 - 7.5 lbs .91 - 3.4 kg
9/20 9/21 RH*	36	.74 - 2.5 oz 21 - 70g	1.5 - 5.6 lbs .68 - 2.54 kg
5/18 5/18 RH*	50	.6 - 1.5 oz 18 - 42g	1.9 - 4.7 lbs .87 - 2.13 kg
MINI**	56	.28 - .56 oz 8 - 16g	1.0 - 1.97 lbs 448 - 896g

* Models 10/25 RH, 9/21 RH, & 5/18 RH are a different diameter than our standard offerings. For these heads to be interchangeable, the dough entrapment ring must also be changed and additional modifications must be performed to the machine at the time of purchase.

** The Mini model is a fixed head machine and cannot be interchanged with other available head models.

SPECIFICATIONS

KNIFE HEAD ASSEMBLY AVAILABILITY

KNIFE HEAD	SEMI/SEMI RH	EASY	EASY PLUS	FULL	FULL CLASSIC	HAND DIVIDER
8/250 8/251 RH	●	●	●	●	●	
6/150 6/151 RH	●	●	●	●	●	●
7/70 7/71 RH	●	●	●	●	●	
4/40 4/41 RH	●	●	●	●	●	
11/30 11/31 RH	●	●	●	●	●	●
10/25 10/25 RH*	●	●	●	●	●	
9/20 9/21 RH*	●	●	●	●	●	
5/18 5/18 RH*	●	●	●	●	●	
MINI**	●	●	●			
QUADRO SERIES***	●	●	●	●	●	

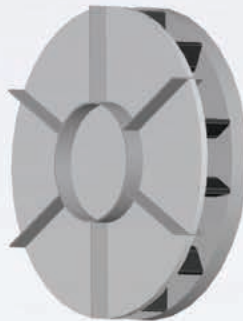
* Models 10/25 RH, 9/21 RH, & 5/18 RH are a different diameter than our standard offerings. For these heads to be interchangeable, the dough entrapment ring must also be changed and additional modifications must be performed to the machine at the time of purchase.

** The Mini model is a fixed head machine and cannot be interchanged with other available head models.

*** The QUADRO SERIES is a square head configuration. For complete details please view the section regarding the QUADRO SERIES.

KNIFE HEAD ASSEMBLIES

Depicted are the various knifehead assemblies available for our Divider/Rounder lineup. These diagrams correspond with the "Number of Parts" column depicted in the Product Specifications chart above.



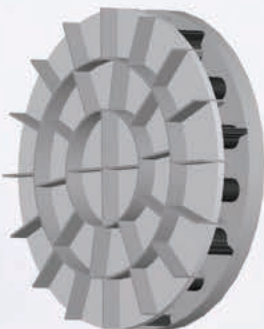
7 PART



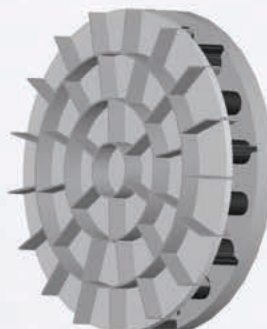
15 PART



20 PART



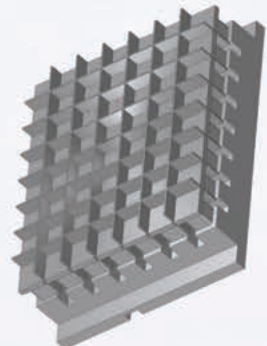
30 PART



36 PART



50 PART



56 PART

IT'S NOT JUST
A DIVIDER/ROUNDER,
IT'S AN ERIKA RECORD



ERIKA RECORD
BAKING EQUIPMENT

ERIKA RECORD BAKING EQUIPMENT
190 FAIRFLED AVENUE, WEST CALDWELL, NJ 07006

PHONE: 973.614.8500 | FAX: 973.614.8503
E-MAIL: SALES@ERIKARECORD.COM | WEB: WWW.ERIKARECORD.COM

© 2020 | ERIKA RECORD LLC, ALL RIGHTS RESERVED. SPECIFICATIONS ARE SUBJECT TO CHANGE WITHOUT NOTICE.